

# *Sacred Grove Academy*

*A Pagan Cover School Ministry of Sacred Grove Church*

**Winter 2017-2018**

**Sacred Grove Academy**  
P.O. Box 505  
Auburn, AL 36831-0505

**Linda Kerr, Director**

**Phone:**  
**(334) 408-7372**

**Email:**  
**sacredgroveacademy@  
gmail.com**

**Website:**  
**www.sacredgroveacademy.  
org**

*Sacred Grove Academy is a church school operated under legal code 16-28-1, 16-28-3, 16-28-7, and 16-46-3 (church school law) of the State of Alabama*



I hope everyone is staying warm in this weather! Now is a great time to search for good indoor activities. I've included an article about mini terrariums on page 4, and an article about Imbolc on page 5. Enjoy!

## **Proof of Enrollment**

When you first enrolled, you were mailed a copy of your Church School Enrollment Form (CSEF), and emailed (or mailed) a Certificate of Enrollment. Either of these should suffice for proof of enrollment. Keep in mind that these, along with your ID card, are sent out only ONCE, when you first enroll—I do not send out fresh ones each school year. So please hang on to these forms! A copy of your original CSEF is \$10.

Likewise for the school boards—as per Alabama law, they are mailed the enrollment form the first time you enroll, and they don't get new ones each year. Also, these forms are sent to the superintendent's office, and not to the individual schools or to truant officers. So if you ever get a call from a teacher, principal, or truant officer demanding proof of enrollment, in addition to asking them to call me for verification, you can tell them that the original CSEF is on file in the superintendent's office.



## **Learners' Permits/Drivers' Licenses**

Is your teenager ready to drive? There are different ways to prove a student is enrolled in order to qualify for a license; the simplest is probably the Enrollment/Exclusion Form. Go to our website, and click on Forms (<http://www.sacredgroveacademy.org/forms.shtml>). Scroll down about halfway until you see "Form for Learners' or Drivers' Permit." Click on the link, print the form, fill out Section I, mail to me (or scan and email it). I will fill out my part and sign it, and then will mail it back to you.



# Imbolc



## **If You Move:**

If you move to a new residence within the state of Alabama, and you move into a different public school district, you **MUST** send in a new Enrollment Form for the new school district, **immediately** (don't wait for re-enrollment time!). You do not have to inform the previous school district that you have moved, but you do need to let the new one know that you are enrolled in a church school; otherwise you will be subject to truancy laws.



## **Attendance Forms Due by August 1**

Attendance forms for 2017-2018 will be due at the end of the school year, and must be received by August 1, 2018. Your completed attendance forms are essential to fulfilling the letter of the law, and without them, you will not be able to re-enroll for the following year, even if you have sent your tuition.

ON-LINE: Submit your attendance through our website! <[www.sacredgroveacademy.org/forms/Attendance/form.html](http://www.sacredgroveacademy.org/forms/Attendance/form.html)>

You can also email your attendance forms; either by scanning and emailing your handwritten copies, or by emailing your Word or Excel document.

## **Re-Enrollment Deadline: August 1**

The deadline for sending in your attendance forms and for re-enrolling is AUGUST 1. All enrollments will officially end on July 1; however, you can re-enroll for the 2018-2019 school year beginning anytime after June 1. The tuition is \$75 for the first child, and \$25 for each child thereafter. In order to re-enroll, you must send the tuition, and your previous years' attendance forms. You do not have to fill out a new Church School Enrollment Form, unless you have recently moved to a new school district.

### **Late Re-Enrollments With Notice:**

If you contact us PRIOR TO AUGUST 1 to tell us you will be late: You will have a grace period of 30 days, until August 31, to send in your re-enrollment tuition for the upcoming school year. There will be a late fee of \$25 per family, which must be paid, in addition to the tuition, before you will be considered to be re-enrolled. Please note that if your late re-enrollment is not received by August 31, we will begin un-enrollment procedures.

### **If You Miss the August 1 Deadline:**

If you have not re-enrolled by August 1 and have not contacted us to let us know you will be late, you'll be considered withdrawn, and we will send the obligatory letter to the school board stating such. You can re-enroll after that time, but you will need to pay the \$25 admission fee per child in addition to the tuition, and fill out both the Church School Enrollment Form and the Admission Form again.

### **How to Pay for Your Re-Enrollment:**

We accept re-enrollment tuition payments either via check or money order sent regular mail, or over the web using PayPal. You can use this free service to pay for your renewal each summer.

The link to pay via PayPal is <[www.sacredgroveacademy.org/Paypal.html](http://www.sacredgroveacademy.org/Paypal.html)>.

## **Transcripts Policy**

You may prepare your own transcript using the blank forms provided on our website. However, if you'd like Sacred Grove Academy to prepare an official transcript for you, with the director's signature, there is a \$25 transcript fee. You will need to fill out the Transcript Request Form (available on our website), and send it in with your check or money order (or pay via PayPal). If you'd like the records faxed, there is a \$5 fax fee, and there is also a \$15 rush fee for faster than two-week service (fax fee is extra).

The parent/teacher must supply the subjects and grades for the student, using the Transcript Request Form. Sacred Grove does not know what your child studied nor what his/her grades were. Parents must turn in attendance forms BEFORE an official transcript will be made. If the student has not turned in an attendance form, we will send a letter stating no work can be verified. Official transcripts will not be made for non-graduating students withdrawing before the end of the school year. If a student withdraws during the school year to transfer to another school, parents will need to negotiate admission to another school on that school's terms, without a transcript from Sacred Grove Academy. Official transcripts will not be made for partial years of less than three months. For any partial year of the student's enrollment, we will send a letter stating no work can be verified. Official transcripts can only be made for the period of time your child was enrolled with Sacred Grove. We can not create transcripts for any school years, full or partial, prior to or after your child's enrollment in Sacred Grove. All fees must be paid before a transcript is sent to the parent, school, or college. All transcripts will be mailed, unless a fax is requested and the extra fee (\$5) paid.

## **Withdrawal Policies:**

All enrollments end on July 1. If you do not re-enroll by August 1, you will be considered withdrawn, but may re-enroll at any point in the future, as long as all other policies have been adhered to. After August 1, an official letter to your local school superintendent will be sent stating that you are no longer enrolled in Sacred Grove Academy (as required by state law).

You can also officially withdraw from Sacred Grove at any time during the school year. **\*\*No refunds will be given at any time.\*\*** Families withdraw for various reasons, including sending their children back to public school, or moving out-of-state. To officially withdraw during the school year, just send a notice to Sacred Grove by mail or by email, stating that you are withdrawing. An official letter to your local school superintendent will then be sent stating that you are no longer enrolled in Sacred Grove Academy.

## **Removals & Improper Withdrawals:**

NOTE: After *\*any\** official or improper withdrawal or removal, an official letter to your local school superintendent will be sent stating that you are no longer enrolled in Sacred Grove Academy, and we will send a letter to your last known address stating the same. If you are not enrolled anywhere else, you will be subject to truancy laws.

*You will be removed from enrollment with Sacred Grove if:*

- You do not send your child's previous years' attendance forms in by August 1;
- If you write a worthless check, and restitution is not made within 30 days (civil charges may apply); or if any other fees are in arrears and are not paid within 30 days.

In the above cases, until your fees or forms are mailed in to us, no records or information will be

released about your child to you or to subsequent schools that may request such, nor will we provide diplomas, transcripts, letters giving date of withdrawal for purposes of GED, driver's license, or other reason, or any other information requested about that child. Furthermore, if attendance forms are not received within 12 months of your withdrawal (for example, 2017-2018 forms sent in by August 1, 2019), all of the above will apply, and no one in your family will be allowed to enroll or re-enroll in Sacred Grove Academy at any point in the future for any reason.

## ***You will be considered to be improperly withdrawn if:***

- If your summer or winter newsletter is returned undeliverable because you have moved and not sent in a change of address, and we cannot then get in touch with you by phone or email; as we will have no way of knowing whether you are still in your original school district or even in the state (Note: if your newsletter comes back, we make a reasonable attempt to contact you before removing you from the rolls);
- We discover that you have enrolled your child in a different school when that school sends us a request for your child's records, and you have not officially withdrawn (NOTE: We will NOT send any information without receiving an official withdrawal from you!)

In the above cases, no one in your family will be allowed to enroll or re-enroll at any point in the future for any reason, and no records or information will be released to you or to subsequent schools that may request such, nor will we provide diplomas, transcripts, letters giving date of withdrawal for purposes of GED, driver's license, or other reason, or any other information requested, AT ALL for that child.

# Mini Winter Terrariums

By Ana Dziengel

<https://babbledabbledo.com/mini-winter-terrariums/>

Winter doesn't always evoke thoughts of learning how to make a terrarium but why shouldn't it? For the record, I'm pretty obsessed with terrariums, dioramas, mini villages, train sets etc. Today I'm sharing a fun little holiday DIY project: Mini Winter Terrariums. Technically speaking I believe a terrarium should have something actually growing in it, so these can't quite qualify, but I think they are pretty fun to make and look at!

Over the past few weeks I have been collecting jars in preparation for this post, looking for the perfect container for my terrarium. I was even planning on going out and purchasing one, and then it dawned on me, why not create a collection of terrariums in different sized jars? I love re-purposing used items so it was perfect! If you are wondering where to get the animals, mine are from the here are the ones I used.

## Materials

- An assortment of clean glass jars, lids optional
- Salt
- Pebbles
- Moss
- Mini Animal Figures
- Cardboard
- Hot glue
- Spray paint and primer, optional if you want to paint the lids

## Instructions

My kids didn't follow these instructions at all! They just wanted to pour salt into jars and stick figures in them. This is a pretty straightforward project so



that method works! However if you want a little more long lasting and controllable results here are the steps to take:

- **Step One** Select your jar, figure, and accoutrements.
- **Step Two** Depending on the height of the jar you may either hot glue everything to the bottom of the glass jar or glue everything to a piece of cardboard to build up some height. I used some cardboard packing shapes as the bases, then glued that to the bottom of the jar
- **Step Three** Add your salt. Be careful not to pour it over anything it will get stuck in, like the moss. Depending on how snowy you want it to look you can adjust the salt height by slowly adding more or pouring a little out.

You're done! Make a few more for a little menagerie.

That was easy, right?

Making mini terrariums is a great project for the kiddos. Terrariums always spark young imaginations!

**Continued on Page 7**

# Imbolc Lesson for Children

By Sandra Rios

<http://yeoldewitchesbrewmagazine.presspublisher.us/issue/imbolc-2012/article/imbolc-lesson-for-ch>

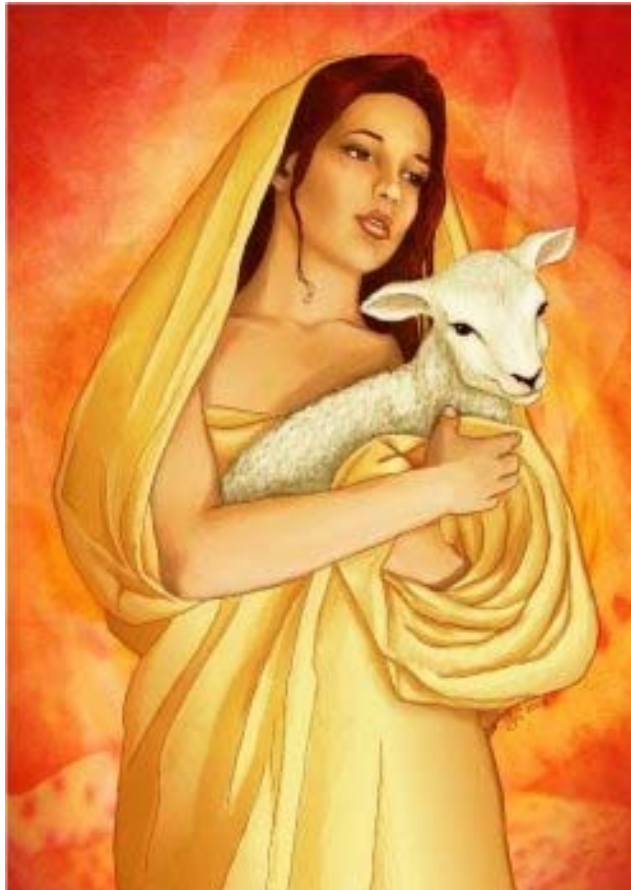
Imbolc is a wonderful time of year. We start to see signs of the upcoming spring and the cold doesn't seem to bite as much each day. We celebrate Imbolc (sometimes called Candlemas) with a great festival of light and fire! We may keep many candles lit, or maybe even light a HUGE bonfire!

So what's the best way to teach children about the meaning of Imbolc other than just running through a ritual or doing a few crafts? If you're like me you prefer a more structured way of teaching your kids so that you know 100% that they got it while experiencing the holiday!! If you like a more relaxed method you can still use this lesson plan but tailor it to you and your kids.

Just remember whenever teaching children try to avoid words with a negative value for them. If they get a question wrong say, "That's a great answer. We can also look at it this way..." This keeps them feeling positive about themselves and engages them in the critical thinking process. Here is the lesson plan I have come up with for Imbolc. I hope you enjoy!

**Topic:** Imbolc (Candlemas) February 2nd

**Content:** (key concepts, vocabulary) Here are just a few of the MANY possible facts,



legends, and stories you can share with your children.

Imbolc is celebrated on the 2nd of February. The name Imbolc comes from a Gaelic word for "sheep's milk". This is because Imbolc is celebrated about the time that cattle like sheep, and cows are having or at the end of carrying their first babies and the mothers are full of milk.

On this day we cleanse and consecrate our homes and tools and get ready for the return of the spring. This is why we light a lot of candles or a bonfire during this holiday. They symbolize the return of the sun and the days getting longer.

Imbolc is the beginning of the

reign of the Maiden aspect of the goddess until the sun returns to its fullest and the Mother aspect takes over. The Goddess Brigit, or Bride, is a Celtic Maiden Goddess of art, poetry, and metal smith as well as the keeper of the sacred, eternal flame.

On the Eve of Imbolc, young girls would make female figure (to represent Brigit or Bride) from a sheaf of corn, and decorated it with shells and crystals, as well as with early spring flowers and greenery. This effigy was carried door to door by the "Bride Maiden band" and everyone they visited had to pay homage and give her a gift such as honey, crystals, cheese or butter. This was to ensure receiving her favor for the coming year.

On the same night the adult women would make a bride's bed. A soft bed of straw was made and covered with soft white cloth. A dolly would be made of oat or corn and laid in the bed. In her hand she would have a white wand. This was meant to invite Bride to stay in the home and bring gifts to the family. Before laying down the hearth ashes were smoothed so that in the morning they could be searched for signs of her visit. Marks from her wand meant they were favored, foot print meant abundance of field and flock for the coming year!

## Goals:

- To be able to identify the holiday celebrated in February and why

**Materials:** Your journal, a pen or pencil

**Instruction:** (Demonstration, model, and explanation)

Get as many candles as you can find tea lights, votives, pillars, containers, etc. Place them all around a room in your house. Gather your pictures of Brigit, and anything that symbolizes Imbolc to you. Have the children light all the candles with you (if they are old enough) as you discuss the information about Imbolc along with stories, legends, or any other artistic pieces that speak to you about the holiday. After all the candles are lit give the children some time to feel the difference between a room full of candle light with a religious meaning and a room with an artificial light on. Finish up this initial session with snack of cakes and milk and honey.

**Practice:** (Guided/monitored activity)

Reinforce the information in the contents section plus anything you'd like to add as you make crafts, food, and do ritual with your children.

### **Craft: Brigit Corn Dolly**

*Ingredients:*

- Corn Husks
- String
- Small balls (cotton, marbles, rubber, etc)

If you're using dried husks make sure to soak them so they are easy to bend without breaking. Fold one strip of husk over your small ball/balls, twist and secure with string. Make sure you leave some husk hanging for the torso.

Take another husk and tie off the ends with string to look like little hands. Slide the "arms" between the front and back of the torso husk and tie off. You can place some balls in the torso area to give some bulk.

Place a few husks upside down around the waist and tie off. The husks should be covering her face at this point. Now fold them down and tie off at the waist again. This will now look like a skirt and the bottom can be trimmed for a nicer look. Let your doll dry completely.

Now decorate! Give her a face, some yarn or thread hair, an apron and bandanna hat, etc. Make her special and durable to be used to honor Brigit, and the gifts she brings your home, for years to come.

### **Craft: Bride's Bed**

*Materials:*

- Basket
- Bedding or cloth to make bedding (straw bedding optional)
- A Bride Doll (see above)
- Priapic Wand

First take your basket and fill with straw or whatever bedding you have. If you want you can make a small mattress for it with some pillow filling and cloth! You can decorate the bed however you like. Place your Bride doll in the bed with a priapic wand. The bed and doll should sit by the hearth fire all night while you sleep. If you are like me and have no Hearth fire you can use a candle placed next to the bed. However, if you do this I suggest using a huge container to place the candle in for safety. Let it burn in YOUR bedroom as opposed to the living room or the child's room and leave the pets in the living room tonight! At least this way if there is an accident the container should hold the fire, and if not at least you are the first one to know and can put it out before any real damage is done!

### **Recipe: Loaded Potato Soup**

*Ingredients:*

1 pound bacon, chopped

1 onion, chopped  
3 cloves garlic, minced  
8 potatoes, peeled and cubed  
4 cups chicken stock or enough to cover potatoes  
3 tablespoons butter  
1/4 cup all-purpose flour  
1 cup heavy cream  
1 teaspoon dried tarragon  
3 teaspoons chopped fresh cilantro  
salt and pepper to taste

*Directions:*

In a large skillet cook the bacon over medium heat until done. Remove bacon from pan, and set aside. Drain off all but 1/4 cup of the bacon grease. Use the remaining grease, sauté the onion until onion begins to turn clear. Add the garlic, and continue cooking for a couple minutes. Add the cubed potatoes, and toss to coat. Sauté for 3 to 4 minutes. Return the bacon to the pan, and add enough chicken stock to just cover the potatoes. Cover, and simmer until potatoes are tender. In a separate pan, melt the butter over medium heat. Whisk in the flour. Cook stirring constantly, for 1 to 2 minutes. Whisk in the heavy cream, tarragon and cilantro. Bring the cream mixture to a boil, and cook, stirring constantly, until thickened. Stir the cream mixture into the potato mixture. Puree about 1/2 the soup, and return to the pan. Adjust seasonings to taste.

\*I have had this recipe in my book for YEARS. I have no idea who I got it from but I thank them! My friends know how my memory is!

### **Project: Wheel of the Year Journal!**

Get your child a blank notebook to track nature, holidays, thoughts about the cycles, etc. Note the dates that the first buds appear in spring, when birds begin to migrate, and when the weather

changes.

Ensure they got it: (questioning, talking, journal writing, etc.)

Have the kids either draw a picture, write a story, or some other project about the holiday.

**Homework:** (Assignments measure progress)

Ask them to write a mini ritual for this holiday that you can practice together. It should take no more than 5 minutes and depending on age can include a circle casting or not. It can be as simple as a cakes and ale toast or as elaborate as a full family ritual. Leave it up to them and their imagination!

**Test:** This part is up to you. Some activities may require a test to ensure they got it but it is at your discretion! Here are some possible questions you could use as a test or in the practice section.

- What is the date of Imbolc?
- What else do we call Imbolc?
- Why did the women make a bed for Brigit?
- What was the meaning of carrying the dolly from house to house?
- Why do we light candles or a bonfire for Imbolc?
- What is the reason we celebrate Imbolc?
- Who is Brigit?
- Why do we give offerings of milk and honey for Imbolc?

## Mini Winter Terrariums, continued from page 4

**Variations:**

- **Add Lids** Spray the lids with primer and then a coat of a colorful paint. I added lids only to end up removing them so more light could enter the jar.
- **Snow Globe** Instead of gluing things to the bottom of the jar, glue everything to the underside of the lid, fill the jar with salt, secure the lids on the jar, then turn upside down for a completely contained environment.

I'm using these as a Christmas day centerpiece on our dining room table.

## REMINDERS

*Please do not mail any school work to our office! Also, please do not have your former school(s) mail any previous school records to us. We do not need any of these items. You, the parent, are the teacher, and as such, are fully responsible for grading, and keeping and maintaining school work and records.*

**What We Do NOT Provide:**

- Curriculum (books, etc.)
- Teachers to come to your home
- Teachers at our office to check work or give grades
- An accredited school or program (no cover school in Alabama is accredited)

**Join our Sacred Grove Facebook group!**

<https://www.facebook.com/groups/190035067717206/>



**Attendance Form - Version A**

School Year: \_\_\_\_\_ - \_\_\_\_\_

Student's Name: \_\_\_\_\_ Grade Just Completed: \_\_\_\_\_

Parent's Name: \_\_\_\_\_ Do you intend to re-enroll for the upcoming school year? \_\_\_\_\_

Parent's Email: \_\_\_\_\_ Do you check this email regularly? \_\_\_\_\_

Address: \_\_\_\_\_

JUL	AUG	SEP	OCT	NOV	DEC	JAN	FEB	MAR	APR	MAY	JUN
1	1	1	1	1	1	1	1	1	1	1	1
2	2	2	2	2	2	2	2	2	2	2	2
3	3	3	3	3	3	3	3	3	3	3	3
4	4	4	4	4	4	4	4	4	4	4	4
5	5	5	5	5	5	5	5	5	5	5	5
6	6	6	6	6	6	6	6	6	6	6	6
7	7	7	7	7	7	7	7	7	7	7	7
8	8	8	8	8	8	8	8	8	8	8	8
9	9	9	9	9	9	9	9	9	9	9	9
10	10	10	10	10	10	10	10	10	10	10	10
11	11	11	11	11	11	11	11	11	11	11	11
12	12	12	12	12	12	12	12	12	12	12	12
13	13	13	13	13	13	13	13	13	13	13	13
14	14	14	14	14	14	14	14	14	14	14	14
15	15	15	15	15	15	15	15	15	15	15	15
16	16	16	16	16	16	16	16	16	16	16	16
17	17	17	17	17	17	17	17	17	17	17	17
18	18	18	18	18	18	18	18	18	18	18	18
19	19	19	19	19	19	19	19	19	19	19	19
20	20	20	20	20	20	20	20	20	20	20	20
21	21	21	21	21	21	21	21	21	21	21	21
22	22	22	22	22	22	22	22	22	22	22	22
23	23	23	23	23	23	23	23	23	23	23	23
24	24	24	24	24	24	24	24	24	24	24	24
25	25	25	25	25	25	25	25	25	25	25	25
26	26	26	26	26	26	26	26	26	26	26	26
27	27	27	27	27	27	27	27	27	27	27	27
28	28	28	28	28	28	28	28	28	28	28	28
29	29	29	29	29	29	29	29	29	29	29	29
30	30	30	30	30	30	30		30	30	30	30
31	31		31		31	31		31		31	

MONTHLY TOTAL

\_\_\_\_\_



**Attendance Record - Version B**

**Student's Name:** \_\_\_\_\_

**Grade Just Completed:** \_\_\_\_\_ **School Year:** \_\_\_\_\_ - \_\_\_\_\_

**Parent's Name:** \_\_\_\_\_

**Parent's Email:** \_\_\_\_\_

**Do you check this email regularly?** \_\_\_\_\_

**Address:** \_\_\_\_\_

**Do you intend to re-enroll for the upcoming school year?** \_\_\_\_\_

	<b>Month Total</b>	<b>Year Total</b>
<b>July</b>	_____	_____
<b>August</b>	_____	_____
<b>September</b>	_____	_____
<b>October</b>	_____	_____
<b>November</b>	_____	_____
<b>December</b>	_____	_____
<b>January</b>	_____	_____
<b>February</b>	_____	_____
<b>March</b>	_____	_____
<b>April</b>	_____	_____
<b>May</b>	_____	_____
<b>June</b>	_____	_____

## Have You Moved? If so, have you notified us?

If you move to a new residence within the state of Alabama, and you move into a *different public school district*, you **MUST** send in a new Enrollment Form for the new school district, *immediately* (don't wait for re-enrollment time!). You do not have to inform the previous school district that you have moved, but you do need to let the new one know that you are enrolled in a church school; otherwise you will be subject to truancy laws.

**Sacred Grove Academy**  
**Linda Kerr, Director**  
**PO Box 505**  
**Auburn, AL 36831-0505**

**Phone:**  
**(334) 408-7372**

**Email:**  
**sacredgroveacademy@gmail.com**

**Website:**  
**www.sacredgroveacademy.org**



---

**Sacred Grove Academy**  
**P.O. Box 505**  
**Auburn, AL 36831-0505**

**ADDRESS SERVICE REQUESTED**

